

Lock Stamp Duty

Build 28 has an option to allow One or more Users to lock the Stamp Duty amount.

This is handy for related parties dealings, where the Stamp Duty calculated by Setts +Plus for the consideration differs to that assessed by OSR.

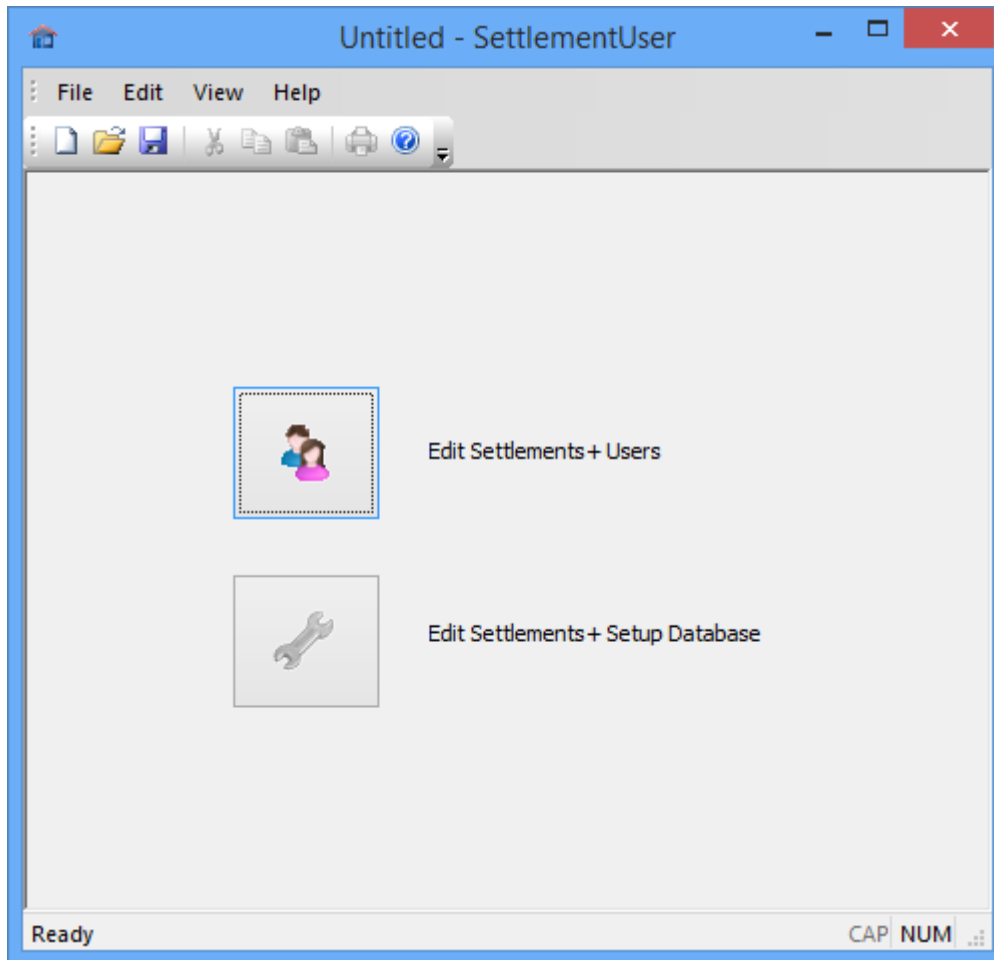
Once the Stamp Duty Amount has been locked any changes made in “Contract Details” that would normally force the Stamp Duty to be re-calculated, this will now not occur. Instead a warning message is displayed advising you of this and the amount of the Stamp Duty will be displayed.

An entry is added to the Note Pad to record when the User has selected to Lock or Unlock the Stamp Duty amount.

How to set this permissions

To set this permission you need to change this via the Settlement User program which is located on the desk top.

Select “Edit Settlement+ Users”



List of Users will appear.

Select the User and press “Edit User”

User Information								
#	User Name	User Full Name	Log	E-Mail	Init...	Title	IP	Te
1	Server	Server	Y				192.168.1.7	
2	*****	13:00:00 12018:00:00	Y					C
3	UserA		Y	luke@settsplus.com.au			192.168.1.7	
4	UserB		N				192.168.1.13	
5	UserC		N				192.168.1.13	
6	UserD		N				192.168.1.13	
7	UserE		N				192.168.1.13	
8	UserF		N				192.168.1.13	
9	UserG		N				192.168.1.13	
10	UserH		N				192.168.1.13	
11	UserI		N				192.168.1.13	
12	UserJ		N				192.168.1.13	
13	UserK		N				192.168.1.13	
14	UserL		N				192.168.1.13	
15	UserM		N				192.168.1.13	
16	UserN		N				192.168.1.13	
17	UserO		N				192.168.1.13	
18	UserP		N				192.168.1.13	
<div> Add User Edit User Delete User Transfer User </div>								

Now select “menu Options”

User Details [X]

User Name:

User Greeting:

User Full Name:

User Password:

User Type: ▼

User Logged On: ☒ User Inactive: ☐

User e-mail:

User Title:

Initials:

User IP: 192.168.1.7

User Team:

User Phone:

User Mobile:

Title Insurance Logon Details

First Title Logon:

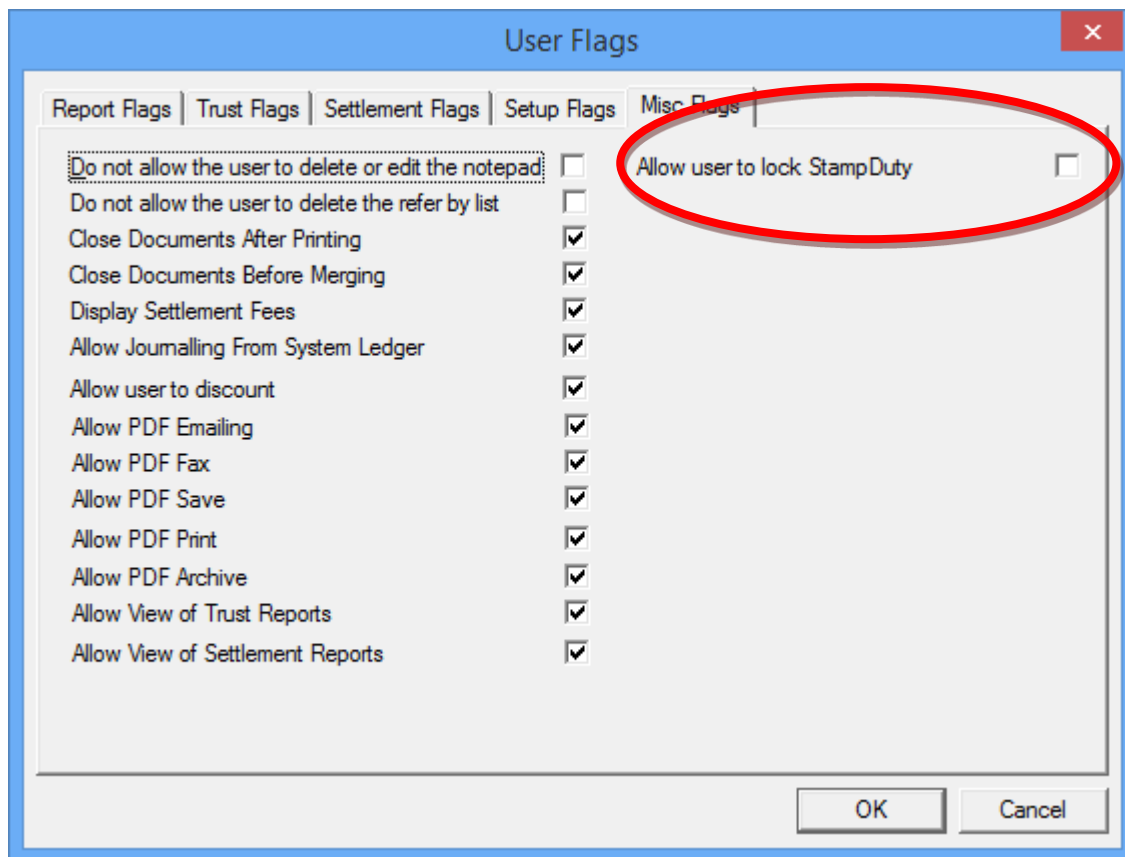
First Title Password:

Stewart Title Logon:

Stewart Title Password:

Menu Options OK Cancel

Then select the “Misc Flags” option.



Ticking this option will “allow User to lock Stamp Duty”.

Press OK.